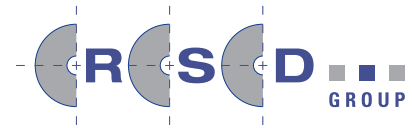


# SP-10 Direct Contact Printer

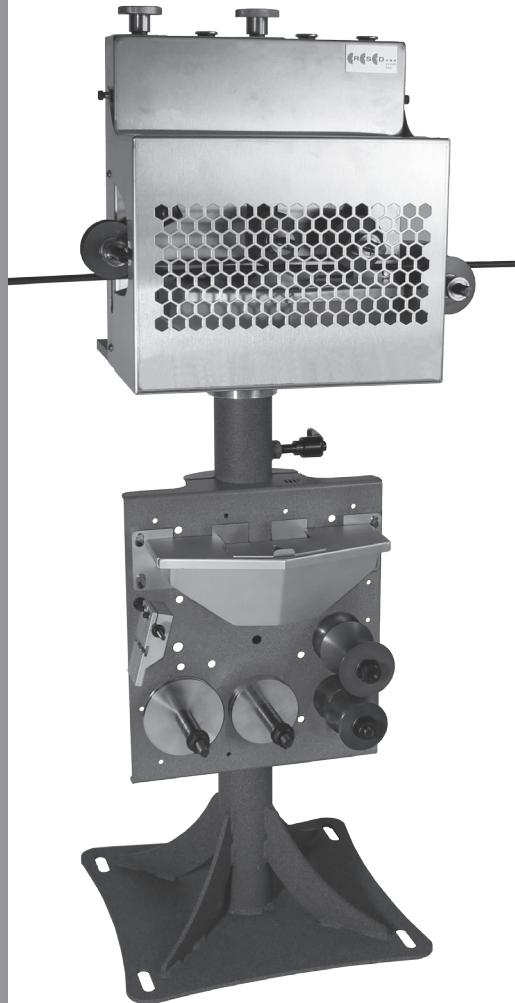


W. GILLIES TECHNOLOGIES



## SP-10 DIRECT CONTACT PRINTER

*Low speed machine for printing on smooth and semi-smooth surfaces*



Designed for printing on continually run or extruded product:

- Insulated Wire
- Cable-Hose
- Tubing
- Extruded Profiles

Designed for printing on a wide variety of substrates:

- PVC
- HDPE
- TPE
- Nylon
- Rubber
- ETFE
- FEP
- XLPE ...etc.

Designed for printing on a wide range of product sizes:

- .030" (0.8mm) up to 3"(76mm) diameter in addition to flat profiles

Designed for flexibility:

- Removable ink pan allows for fast color changes
- Can accommodate 10.6" 12" and 15" circumference print wheels

### **Optional:**

*Storage rack (mounted to stand pedestal) allows easy access to wiping clocks, guide wheels, print wheels and extra ink pan*

**WHEEL SIZES** . . . . . Industry standard print wheels available at W. Gillies Technologies

**PRINT TYPES** . . . . . Characters, numbers, stripes, hash marks, and custom logos available

**PRINT SPEEDS** . . . . . Dependent on product size and configuration: up to 600 feet per minute

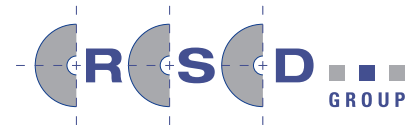
### **RSD GROUP USA**

W. Gillies Technologies, LLC • 250 Barber Ave. • PO Box 60329 • Worcester, MA 01606 USA  
Phone: +01 508-852-2502 Fax: +01 508-852-6453 E-mail: sales@wgillies.com  
Web: [www.wgillies.com](http://www.wgillies.com) [www.rsdgroup.de](http://www.rsdgroup.de)

# SP-10 Direct Contact Printer



W. GILLIES TECHNOLOGIES



*Shown with .080" O.D. product*



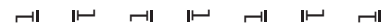
*Shown with .375" O.D. product*



*Shown with 2.10" O.D. product*

## USES ENGRAVED PRINT WHEELS FOR

- Numbering:



- Legend Printing:



- Longitudinal Striping:



- Printing of Corporate logos and regulatory symbols:



## ENGRAVED PRINT WHEEL TYPES

- Concave
- Convex
- Flat

### **RSD GROUP USA**

W. Gillies Technologies, LLC • 250 Barber Ave. • PO Box 60329 • Worcester, MA 01606 USA  
Phone: +01 508-852-2502 Fax: +01 508-852-6453 E-mail: sales@wgillies.com  
Web: www.wgillies.com www.rsdgroup.de