



W. GILLIES TECHNOLOGIES

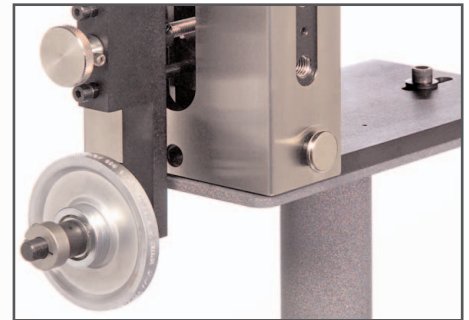
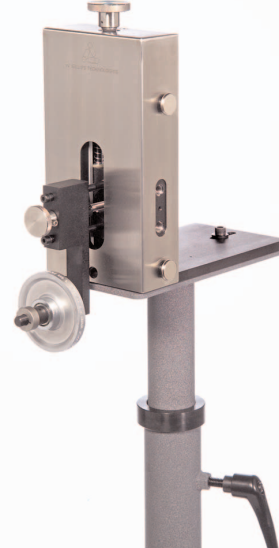
INDENT / EMBOSSING

***Make a quality impression
on your product.***



S-IE-1

Positioning after cross head



S-IE-2

Precise positioning after the cross head or in difficult to reach locations i.e. water trough

Our indent and embossing wheels are designed to mount on a holder at the extrusion line in close proximity to the crosshead. S-IE holders provide precise x-y wheel positioning and pressure regulation, allowing the characters to accurately align and roll over the hot surface of the substrate.

Designed specifically for insulated wire, cable, hose, and tubing applications.

Indent / Embossing Wheel Types

Indent Wheels: Raised characters on the wheel form sunken characters on the product

Embossing Wheels: Sunken characters on the wheel form raised characters on the product

Engraving Specifications

- Characters with sharp chiseled edges provide for a better impression and legibility on the product.
- Depth of characters that can be specified at the time of order placement. This allows the engraving to be "customized" to your specific product. Sensitive product with shallow engraving. Heavy walled and memory sensitive product with deep engraving.
- Logo and character generation that is detailed and precise.
- Wheels that weigh less for improved heat dissipation.
- Wheel sizes available in 12" or 18" circumference. Character sizes as small as 1/32"

W. GILLIES TECHNOLOGIES, LLC • 250 BARBER AVE. • P.O. BOX 60329 • WORCESTER, MA 01606

Phone: 508-852-2502

Fax: 508-852-6453

E-mail: sales@wgillies.com



www.wgillies.com